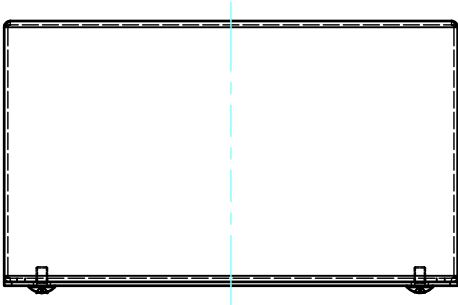
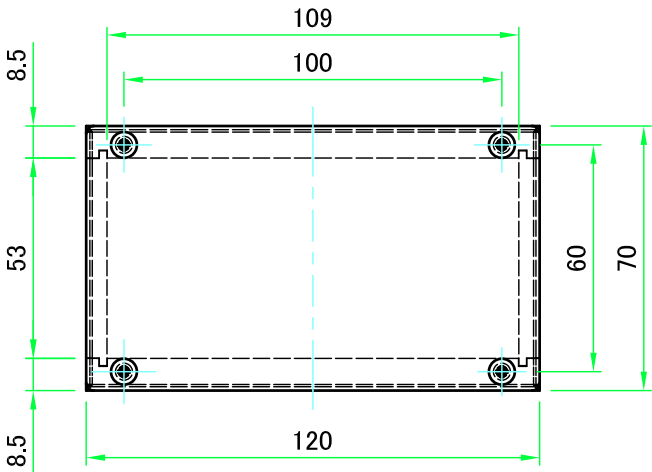


外視 / External view

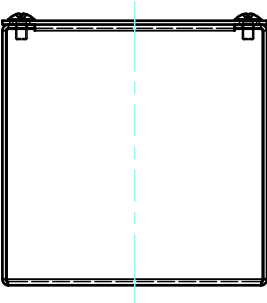
C



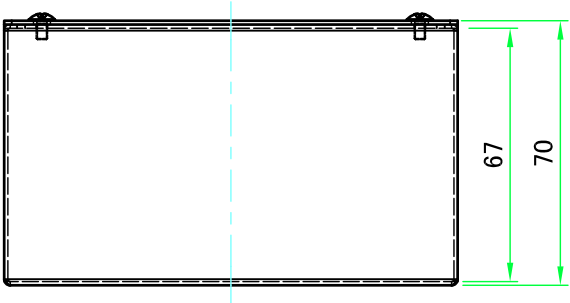
A



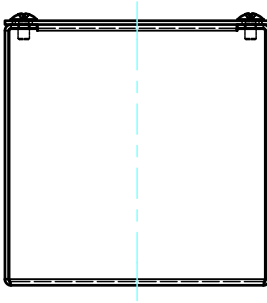
D



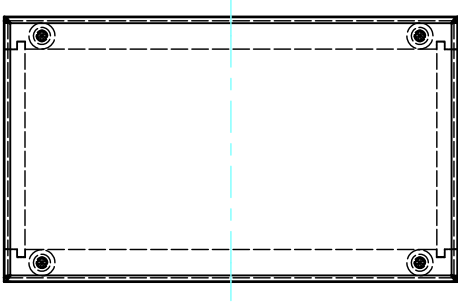
B



E

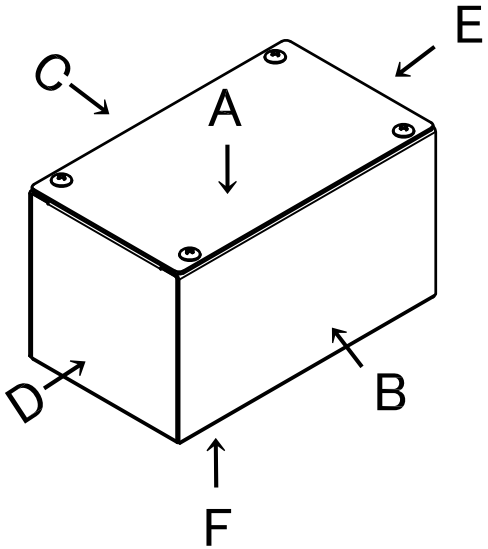
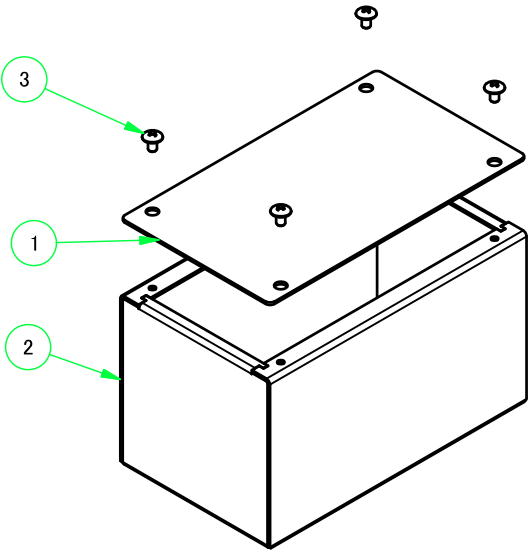


F



構成内容 / Components

| No, | 名称 / Part name                              | 数量 / Pcs | 材質 / Material                             | 色・表面处理 / Color・Finish  |
|-----|---|----------|---|--|
| 1   | カバー<br>Cover                                | 1        | アルミ板 A1100P t1.0<br>Aluminium A1100P t1.0 | 表面 メタリックシルバー塗装、裏面 導通処理<br>Metallic silver painted , Inside Conductive finished |
| 2   | シャーシ<br>Base                                | 1        | アルミ板 A1100P t1.0<br>Aluminium A1100P t1.0 | 表面 メタリックシルバー塗装、裏面 導通処理<br>Metallic silver painted , Inside Conductive finished |
| 3   | 取付ビス (トラスM3 × 5 )<br>Screw(Truss head M3-5) | 4        | 鉄<br>Steel                                | ニッケルメッキ<br>Nickel Plated   |



TAKACHI

株式会社タカチ電機工業

TAKACHI ELECTRONICS ENCLOSURE CO., LTD.

品名/Title

カバー付アルミシャーシ  
ALUMINIUM CASE

承認/Approved

検図/Checked

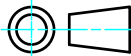
製図/Created

型番/Product number

T12-7-7

作成日/Date

2023/11/21



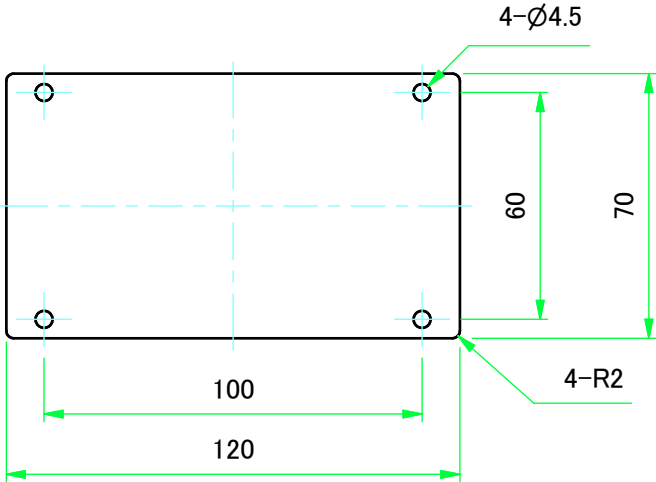
尺度/Scale

1:2

1 / 3

カバー / Cover

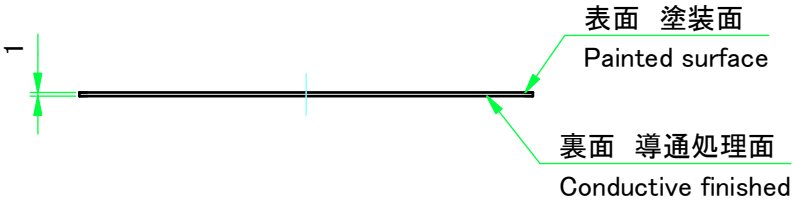
A



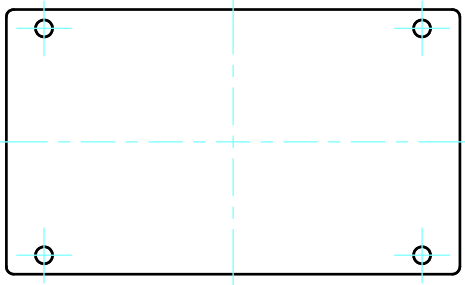
E



B



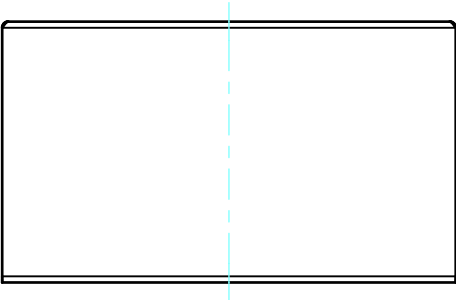
F



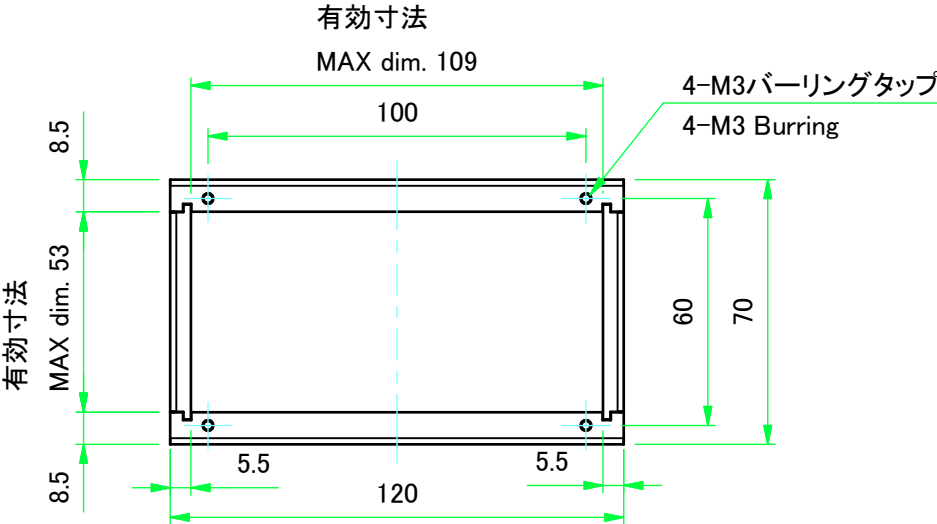
|   |                  |                  |   |                             |
|---|------------------|------------------|---|-----------------------------|
| <div>TAKACHI 株式会社タカチ電機工業</div> <div>TAKACHI ELECTRONICS ENCLOSURE CO., LTD.</div> |                  |                  | 品名/Title<br>カバー付アルミシャーシ<br>ALUMINIUM CASE | <div></div> 尺度/Scale<br>1:2 |
| 承認/Approved<br>中根   | 検図/Checked<br>横田 | 製図/Created<br>根上 | 型番/Product number<br>T12-7-7              |                             |
|   |                  |                  | 作成日/Date<br>2022/09/28                    | 2 / 3                       |

シャーシ / Base

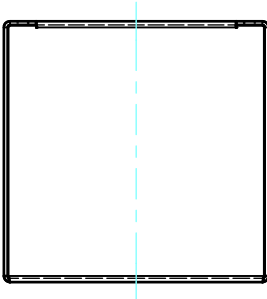
C



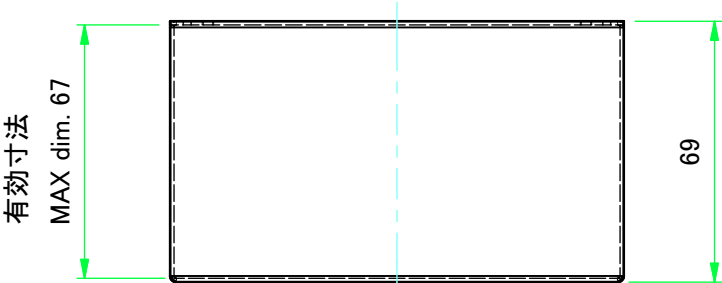
A



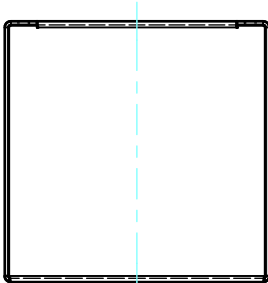
D



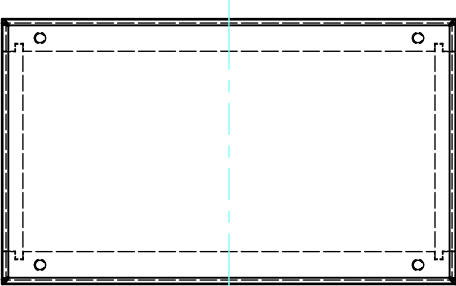
B



E



F



|   |            |            |                     |                      |
|---|------------|------------|---------------------|----------------------|
| <div>TAKACHI 株式会社タカチ電機工業</div> <div>TAKACHI ELECTRONICS ENCLOSURE CO., LTD.</div> |            |            | 品名/Title            | <div></div> 尺度/Scale |
|   |            |            | カバー付アルミシャーシ         |                      |
|   |            |            | ALUMINIUM CASE      |                      |
| 承認/Approved   | 検図/Checked | 製図/Created | 型番/Product number   | 1:2                  |
| 中根  | 横田         | 根上         | T12-7-7             | 3 / 3                |
|   |            |            | 作成日/Date 2022/09/28 |                      |